

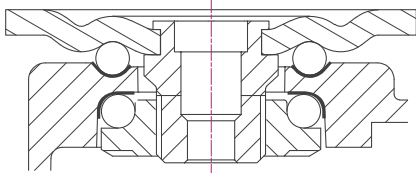
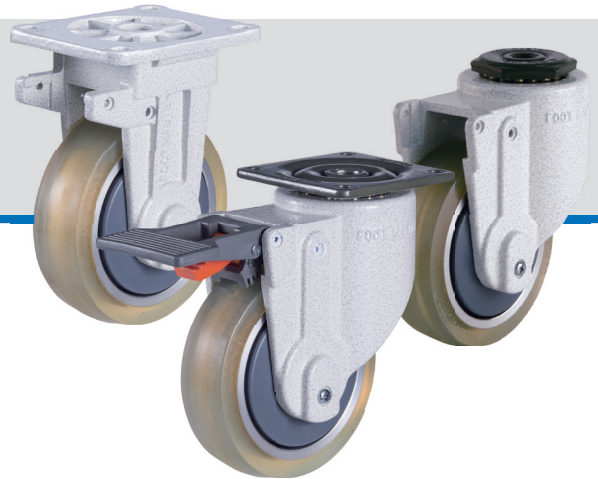
Guide for selection of wheels : Lighty duty casters

| Image | Series | Description | Wheel code | Wheel dia mm | Wheel width mm | Axle bore mm | Hub length mm | Load capacity Kg | Bearing type |
|---|-------------|---|----------------|-----------------|-------------------|-----------------|------------------|---------------------|-----------------|
|  | TUN | <ul style="list-style-type: none"> – Injected polyurethane (Shore A92) – PP core – No bearing | TUN-50-24 | 50 | 24 | 6 | 29 | 40 | X |
| | | | TUN-64-24 | 64 | 24 | 6 | 29 | 50 | X |
| | | | TUN-75-25 | 75 | 25 | 8 | 40 | 75 | X |
| | | | TUN-100-30 | 100 | 30 | 8 | 40 | 100 | X |
| | | | TUN-125-30 | 125 | 30 | 8 | 40 | 110 | X |
|  | TUS | <ul style="list-style-type: none"> – Injected polyurethane (Shore A92) – PP core – One ball bearing | TUS-75-25 | 75 | 25 | 8 | 40 | 75 | 6202 ZZ |
| | | | TUS-100-30 | 100 | 30 | 8 | 40 | 100 | 6202 ZZ |
| | | | TUS-125-30 | 125 | 30 | 8 | 40 | 110 | 6202 ZZ |
|  | TUD | <ul style="list-style-type: none"> – Injected polyurethane (Shore A92) – PP core – Two ball bearings | TUD-100-30 | 100 | 30 | 8 | 30 | 100 | 608 ZZ |
| | | | TUD-125-30 | 125 | 30 | 8 | 30 | 110 | 608 ZZ |
| | | | TUD-150-30 | 150 | 30 | 8 | 30 | 110 | 608 ZZ |
|  | HRN | <ul style="list-style-type: none"> – Injected rubber (Shore A85) – PP core – No bearing | HRN-50-24 | 50 | 24 | 6 | 29 | 40 | X |
| | | | HRN-64-24 | 64 | 24 | 6 | 29 | 50 | X |
| | | | HRN-75-25 | 75 | 25 | 8 | 40 | 75 | X |
| | | | HRN-100-30 | 100 | 30 | 8 | 40 | 100 | X |
|  | HRS | <ul style="list-style-type: none"> – Injected rubber (Shore A85) – PP core – One ball bearing | HRS-75-25 | 75 | 25 | 8 | 40 | 75 | 6202 ZZ |
| | | | HRS-100-30 | 100 | 30 | 8 | 40 | 100 | 6202 ZZ |
| | | | HRS-125-30 | 125 | 30 | 8 | 40 | 110 | 6202 ZZ |
|  | HRD | <ul style="list-style-type: none"> – Injected rubber (Shore A85) – PP core – Two ball bearings | HRD-100-30 | 100 | 30 | 8 | 30 | 100 | 608 ZZ |
| | | | HRD-125-30 | 125 | 30 | 8 | 30 | 110 | 608 ZZ |
| | | | HRD-150-30 | 150 | 30 | 8 | 30 | 110 | 608 ZZ |
|  | SUNS / SUND | <ul style="list-style-type: none"> – High elasticity polyurethane (Shore A70) – Nylon core – Two ball bearings (SUNS: one ball bearing) | SUNS-75-25 | 75 | 25 | 8 | 40 | 90 | 6202 ZZ |
| | | | SUND-100-30 | 100 | 30 | 8 | 30 | 100 | 608 ZZ |
| | | | SUND-125-30 | 125 | 30 | 8 | 30 | 110 | 608 ZZ |
|  | LUD | <ul style="list-style-type: none"> – Cast polyurethane (Shore A90) – Aluminum core – Two ball bearings | LUD-75-30 | 75 | 30 | 8 | 30 | 90 | 608 ZZ |
| | | | LUD-100-30 | 100 | 30 | 8 | 30 | 120 | 608 ZZ |
| | | | LUD-125-30 | 125 | 30 | 8 | 30 | 120 | 608 ZZ |
| | | | LUD-150-30 | 150 | 30 | 8 | 30 | 120 | 608 ZZ |
|  | LUD-WEU | <ul style="list-style-type: none"> – Cast polyurethane (Shore A90) – Aluminum core – Two ball bearings – Anti-static version (10⁸~10⁹Ωcm) | LUD-WEU-75-30 | 75 | 30 | 8 | 30 | 90 | 608 ZZ |
| | | | LUD-WEU-100-30 | 100 | 30 | 8 | 30 | 120 | 608 ZZ |
| | | | LUD-WEU-125-30 | 125 | 30 | 8 | 30 | 120 | 608 ZZ |
| | | | LUD-WEU-150-30 | 150 | 30 | 8 | 30 | 120 | 608 ZZ |
|  | LUP | <ul style="list-style-type: none"> – Cast polyurethane (Shore A90) – Aluminum core – Plain bearing | LUP-75-17 | 75 | 17 | 10 | 22 | 75 | Plain |

FOOT MASTER®

Light duty casters GDC series

120kg RoHS -10~90°C



Brackets: Pressed steel plate(Rigid type: Aluminum), double ball bearing with hardened bearing seats in the swivel head, ivory-colored aluminum frame, total-lock top brake system which is applied in wheel and swivel head simultaneously with independent locking and unlocking lever, bolted wheel axle structure, special type of wheel axle structure
Surface Treatment: Powder coating, zinc plated

* Recommended Load = Load Cap. × 3

| Swivel | Rigid | Swivel with brake | Rigid with brake | Wheel type | mm | mm | Kg | mm | mm | mm | mm | mm |
|-------------|-------------|-------------------|------------------|------------|-----|----|-----|-----|----|----------|----------|----|
| GDC-100-ASF | GDC-100-ARF | GDC-100-BSF | GDC-100-BRF | LUD | 100 | 30 | 120 | 135 | 40 | SF:73x73 | SF:58x58 | 7 |
| GDC-125-ASF | GDC-125-ARF | GDC-125-BSF | GDC-125-BRF | | 125 | 30 | 120 | 162 | 40 | RF:93x73 | RF:76x58 | |

| Swivel | Rigid | Swivel with brake | Rigid with brake | Wheel type | mm | mm | Kg | mm | mm | mm | mm |
|-------------|-------------|-------------------|------------------|------------|-----|----|-----|-----|----|-----------|----|
| GDC-100-ASS | GDC-100-ARS | GDC-100-BSS | GDC-100-BRS | LUD | 100 | 30 | 120 | 135 | 40 | M12x1.75P | 30 |
| GDC-125-ASS | GDC-125-ARS | GDC-125-BSS | GDC-125-BRS | | 125 | 30 | 120 | 162 | 40 | | |

Options

| Code Suffix | LUD | | | | | |
|---------------|--------------|--|--|--|--|--|
| Description | Cast PU(A90) | | | | | |
| Available for | 100 ~ 125 | | | | | |